



ASPIRE

— TO MOVE —



Laura Place, Bath, BA2

Video and physical viewings available. One bedroom flat with the benefit of having it's own garden, available from the 16th July. Offered furnished.

Laura Place is located next to the world famous Great Pulteney Street and offers level access into Bath City centre, 0.2 miles.

- One bedroom flat
- Private garden
- Furnished
- Available 16th July
- Central location
- Council tax band A
- Holding deposit: £323
- Assured Periodic Tenancy

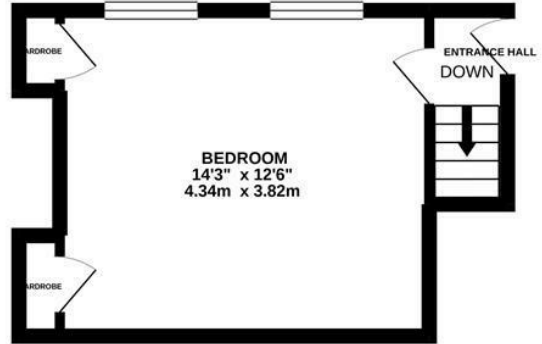
£1,400 PCM

Floor Plans

BASEMENT
505 sq.ft. (46.9 sq.m.) approx.



LOWER GROUND FLOOR
212 sq.ft. (19.7 sq.m.) approx.



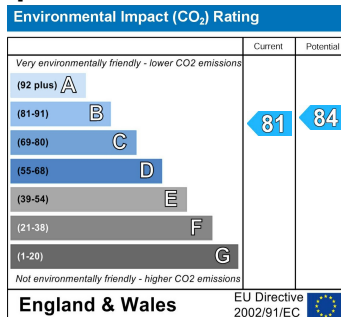
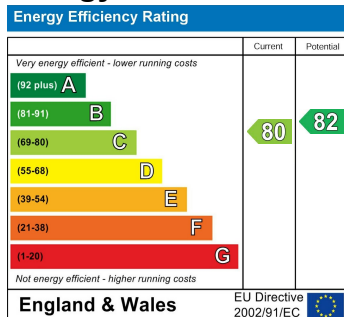
ASPIRE
TO MOVE

LAURA PLACE, BATH, BA2

TOTAL FLOOR AREA: 717 sq.ft. (66.6 sq.m.) approx.

Whilst every attempt has been made to ensure the accuracy of the floorplan contained here, measurements of doors, windows, rooms and any other items are approximate and no responsibility is taken for any error, omission or mis-statement. This plan is for illustrative purposes only and should be used as such by any prospective purchaser. The services, systems and appliances shown have not been tested and no guarantee as to their operability or efficiency can be given.
Made with Metropix ©2021.

Energy Performance Graph



These particulars, whilst believed to be accurate are set out as a general outline only for guidance and do not constitute any part of an offer or contract. Intending purchasers should not rely on them as statements of representation of fact, but must satisfy themselves by inspection or otherwise as to their accuracy. No person in this firm's employment has the authority to make or give any representation or warranty in respect of the property.